

Regional Impact District 12-0

Joseph Szczur, PE
District Executive

Fayette, Greene, Washington, and Westmoreland Counties

The Needs



Westmoreland County, Route 2011 Segment 0060 Offset 1976



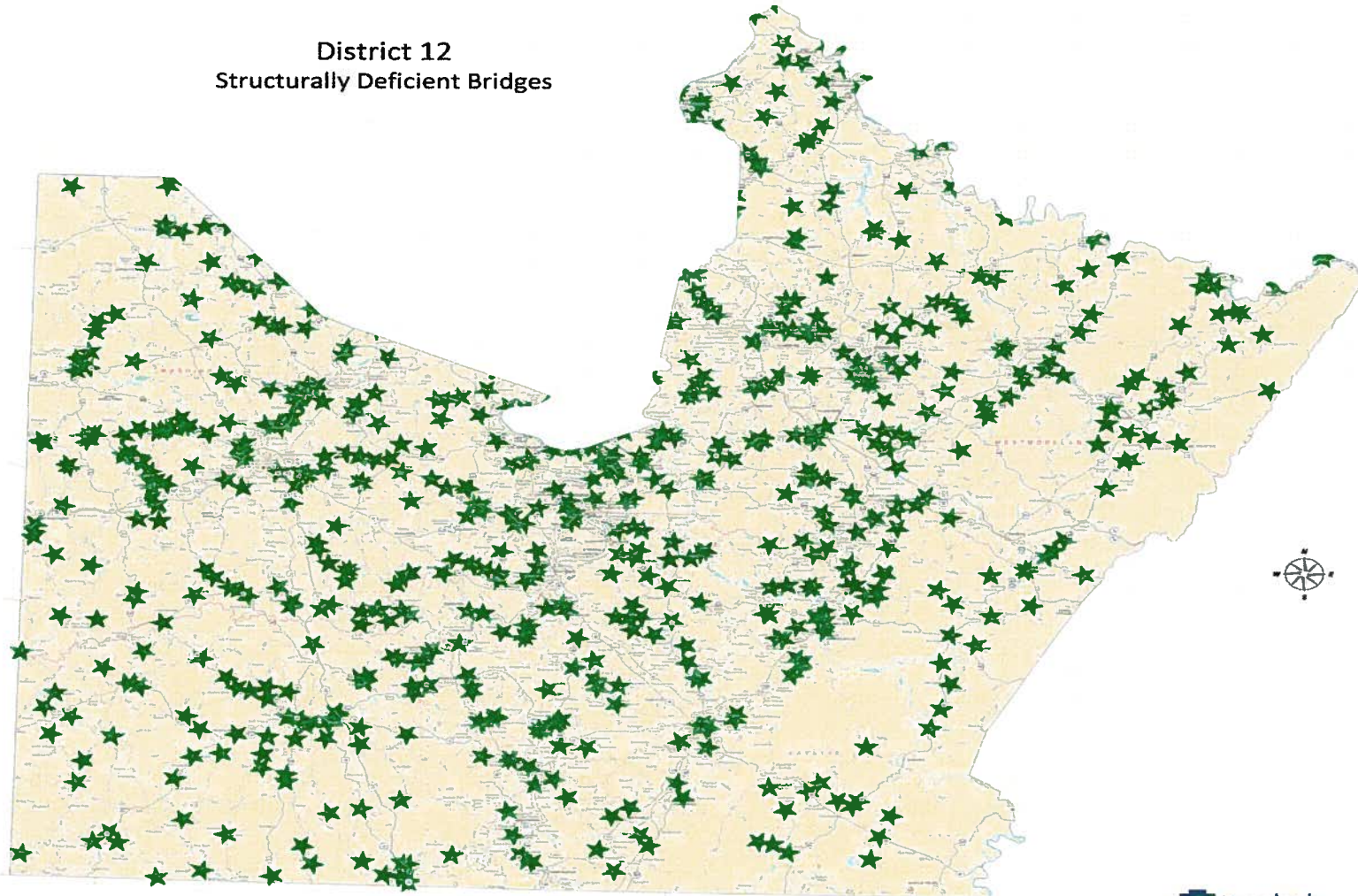
Greene County, Route 21



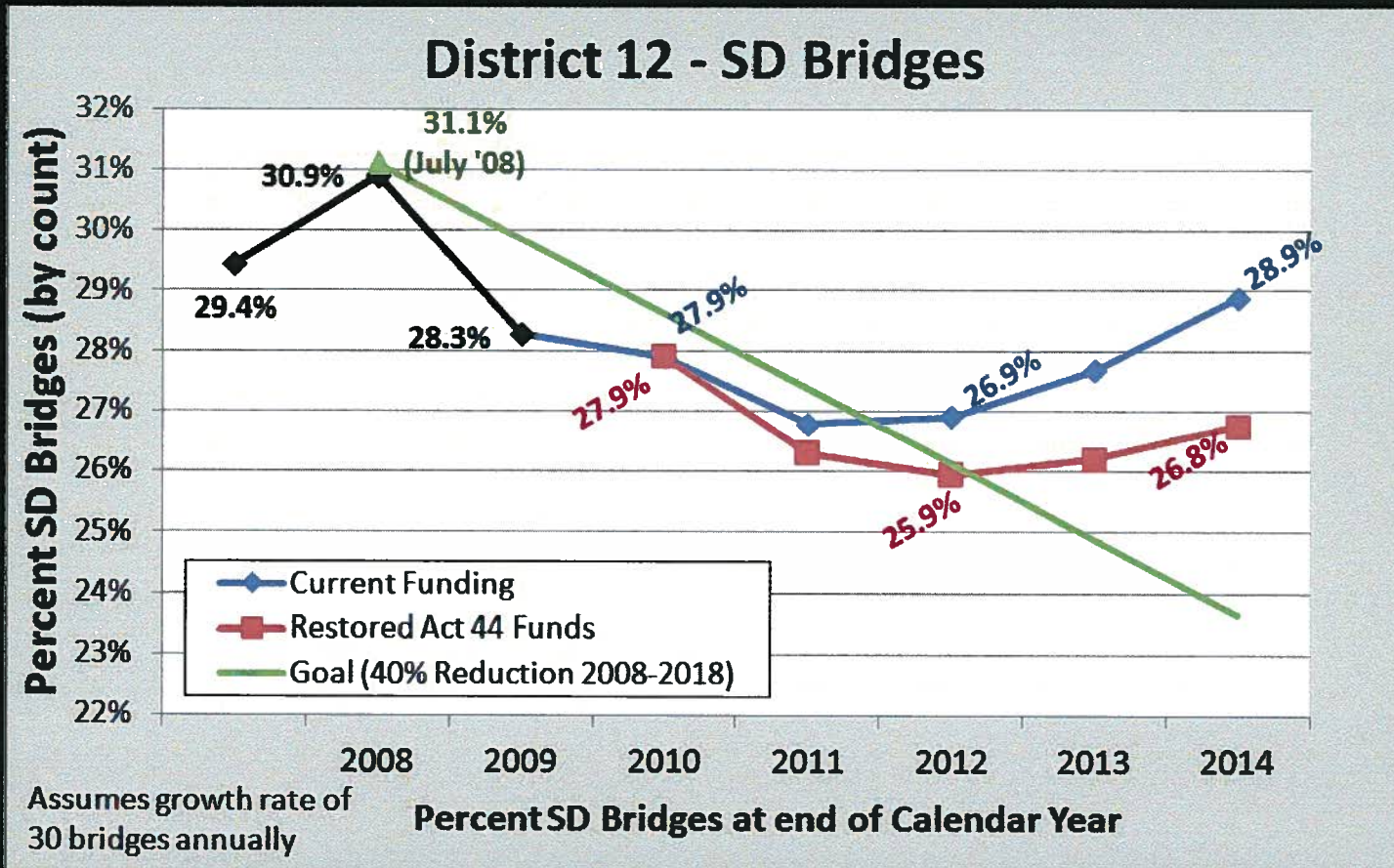
Greene County, Route 88

648 Structurally Deficient Bridges

District 12
Structurally Deficient Bridges

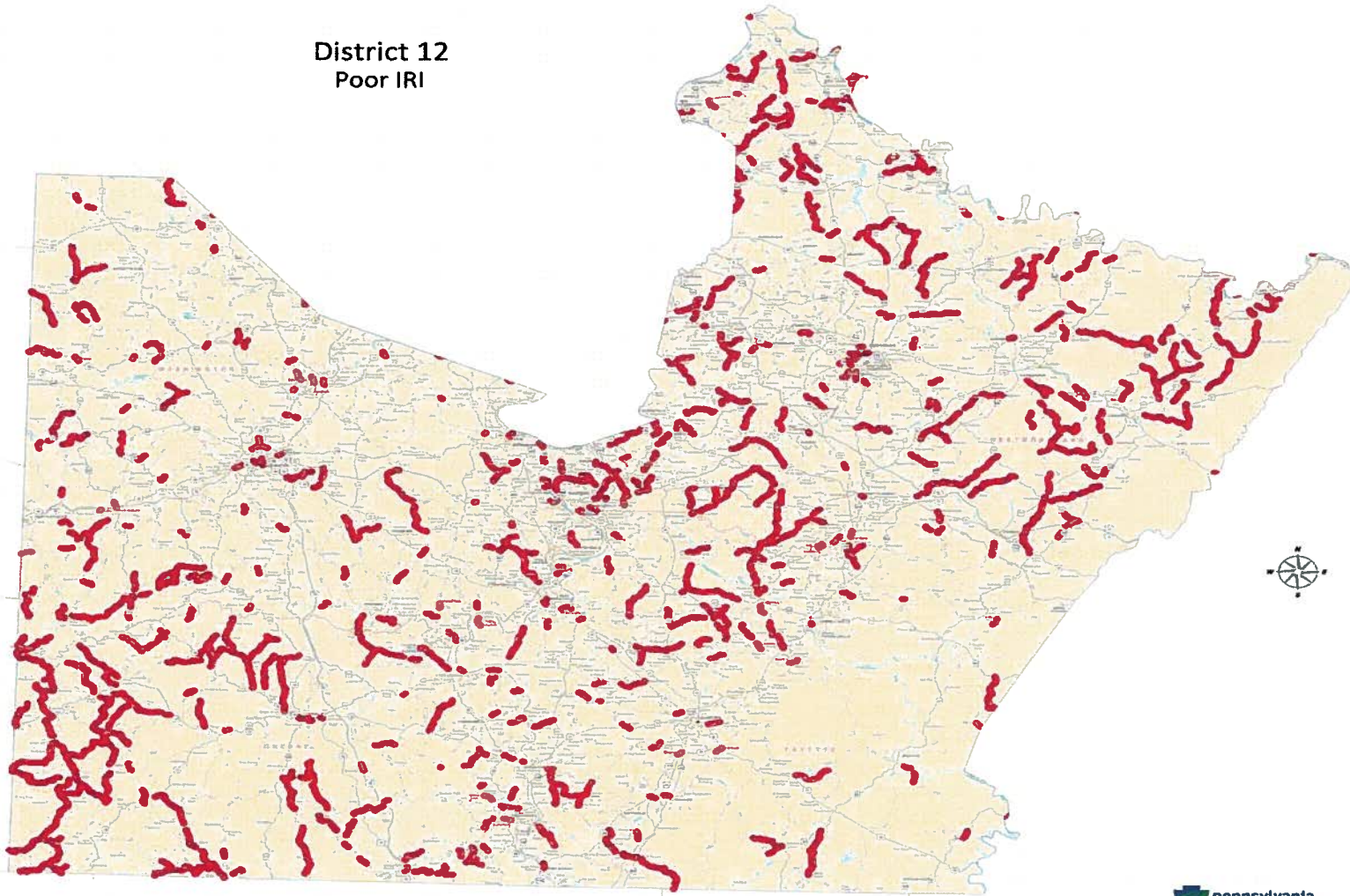


Fixing SD Bridges



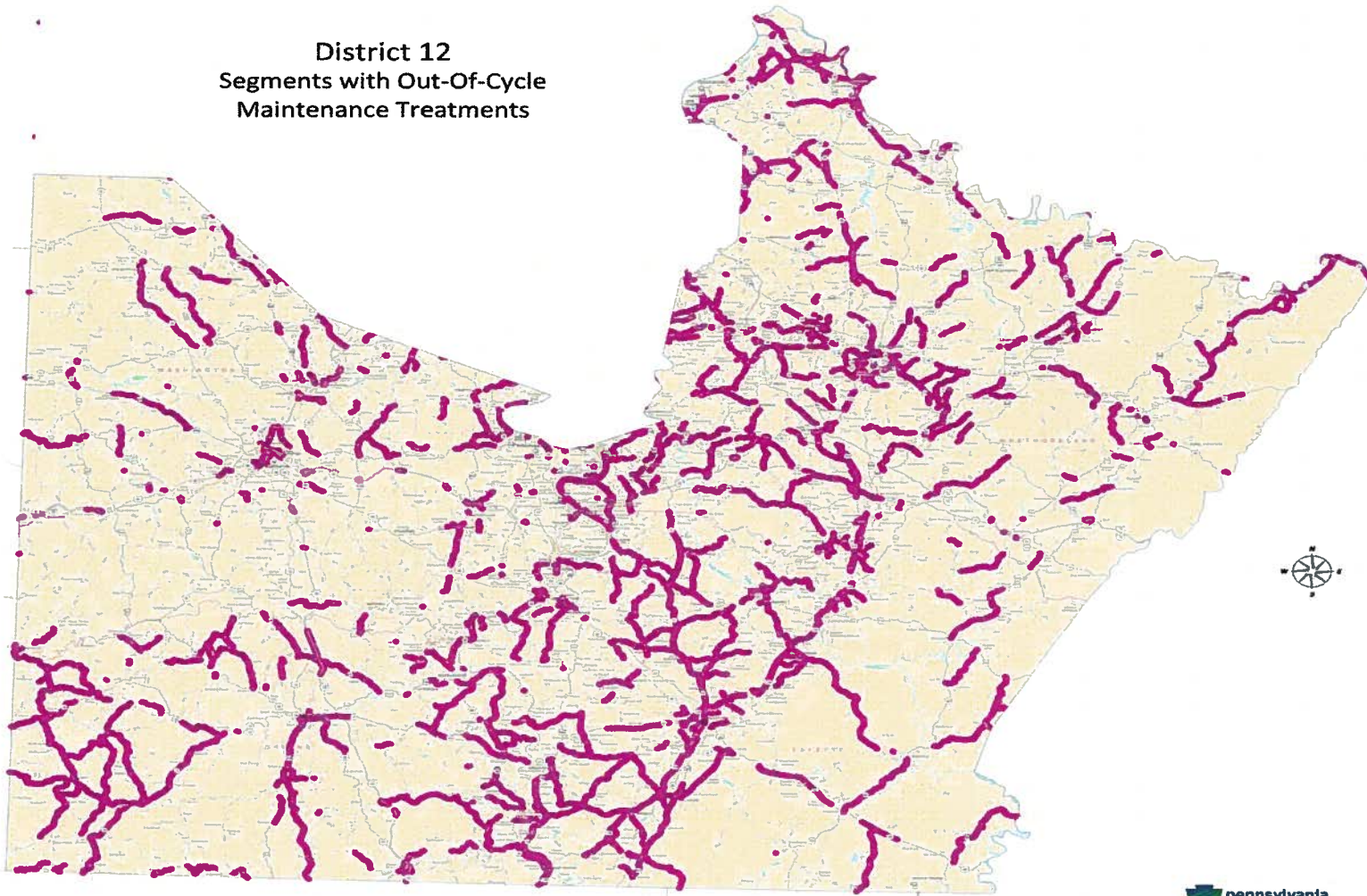
655 miles of poor IRI

District 12
Poor IRI



1,080 Pavement Miles Out of Cycle

District 12
Segments with Out-Of-Cycle
Maintenance Treatments



Annual Funding Shortfall

Bridge & Pavement Needs

Estimated Regional Need	\$335M
<u>Current Funding Level</u>	<u>\$200M</u>
Shortfall	\$135M

Transit Agencies

Transit Agency	Annual Riders	2008-2009 State Operating Assistance
Fayette Area Coordinated Transportation	132,000	\$583,000
City of Washington	47,000	\$956,000
Mid Mon Valley Transit Authority	374,000	\$2.2 Million
Westmoreland County Transportation Authority	463,000	\$2.4 Million



Transportation Funding Crisis



more details available at our new web page

www.fundPAtransportationnow.com