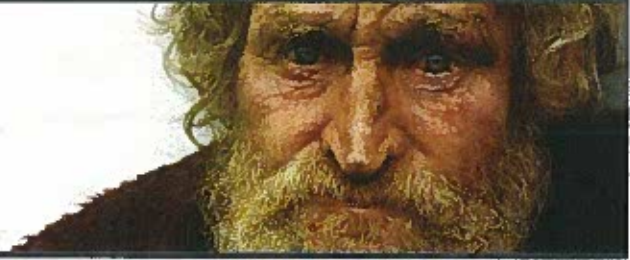


BETHESDA MISSION

99 Years of Rescue, Redemption & Restoration



Bethesda Mission has been providing hope and healing to **hungry & homeless** people in the **Greater Harrisburg** area since 1914.

REFUGE	for over 80 men at the Men's Shelter on Reily Street.
REFUGE	for over 25 women and children at the Women and Children's Shelter.
DISCIPLESHIP RECOVERY	a long-term program dealing with the causes of dysfunctional lifestyles through group and individual counseling and support - 410 enrolled in 2013.
SOCIAL SERVICE PROGRAMS	assists with benefits such as medical, veteran, welfare, social security, etc. - 2,818 units of service provided during 2013.
MEDICAL/DENTAL CLINIC	provided by area medical personnel who volunteer their services on a consistent basis, including on-staff nurses - 4,551 patient visits in 2013.
YOUTH MINISTRY	works with inner-city 7 to 18 year olds through mentoring and a broad range of programming designed to provide the knowledge and strength needed to live life in a responsible, constructive manner.
PUBLIC SOUPLINE	served nightly.
PROVISION OF FOOD	as well as clothing, personal care items, blankets and Christmas gifts to departing guests as well as community people in need.
MOBILE MISSION	provides sleeping bags, warm clothing, sandwiches and coffee or soup to those who remain on the streets - 5,536 ministered to in 2013.
FOOD BAG MINISTRY	distribution of over 17,670 bags of groceries to our area's poor.
2013 STATISTICS	Over 115,405 meals served. Beds slept in over 33,199 times.

Providing food, shelter, clothing and life-changing counseling based on the Gospel of Jesus Christ to all who seek our help.